

BATH TAPPING VEHICLE - BTV

SPECIALISED SUPPORT EQUIPMENT

ett.com



OPERATIONAL FEATURES

ett.com



CONTROLS

The fully speed and sensitivity programmable controls can be set up to exactly meet the requirements of the BTV Operator.

There are 3 pot maneuvering control stations

In Cab

- Full Control of all functions

Outside Left Hand Side

- Compressor Control
- Pot Raise and Lower with safety interlock
- Emergency Stop

Outside Right Hand Side

- Compressor Control
- Pot Raise and Lower with safety interlock
- Emergency Stop

The ETT BTV has a high capacity on-board compressor that ensures that the operator has exact control over the air he needs.

In conjunction with the highly accurate, programmable bath weighing system, this allows efficient, precise bath tapping.

Using these features, the ETT BTV achieves the accurate and controlled bath-handling performance demanded by world class smelter environments.



◀◀ CAB FEATURES

eif.com



CABIN

The cabin design provides a wide field of view, allowing the operator sufficient visibility to follow all operations.

The driver has excellent visibility to allow him to follow all manoeuvres visually, particularly when taking up and laying down loads.

The driver has excellent visibility when traveling along narrow roads or avoiding obstacles in passageways.

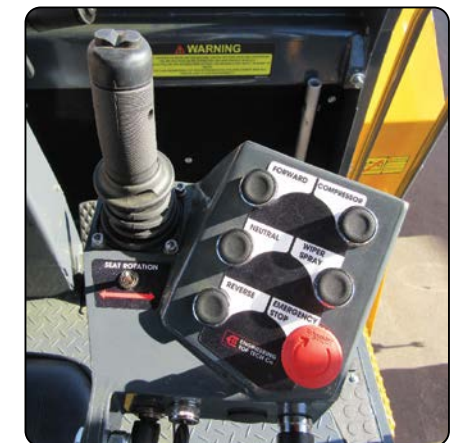
Ladle handling cameras are perfectly positioned to ensure full visibility of the working area at all times.

CONTROLS

The control station is adaptable for drivers of different heights by simple adjustment of the seat, steering wheel and control devices.

All functional controls are clearly marked by means of robust labelling.

Vital Information and warnings are all displayed in a bright graphic interface.



◀◀ CAB DESIGN AND DETAILS

eif.com

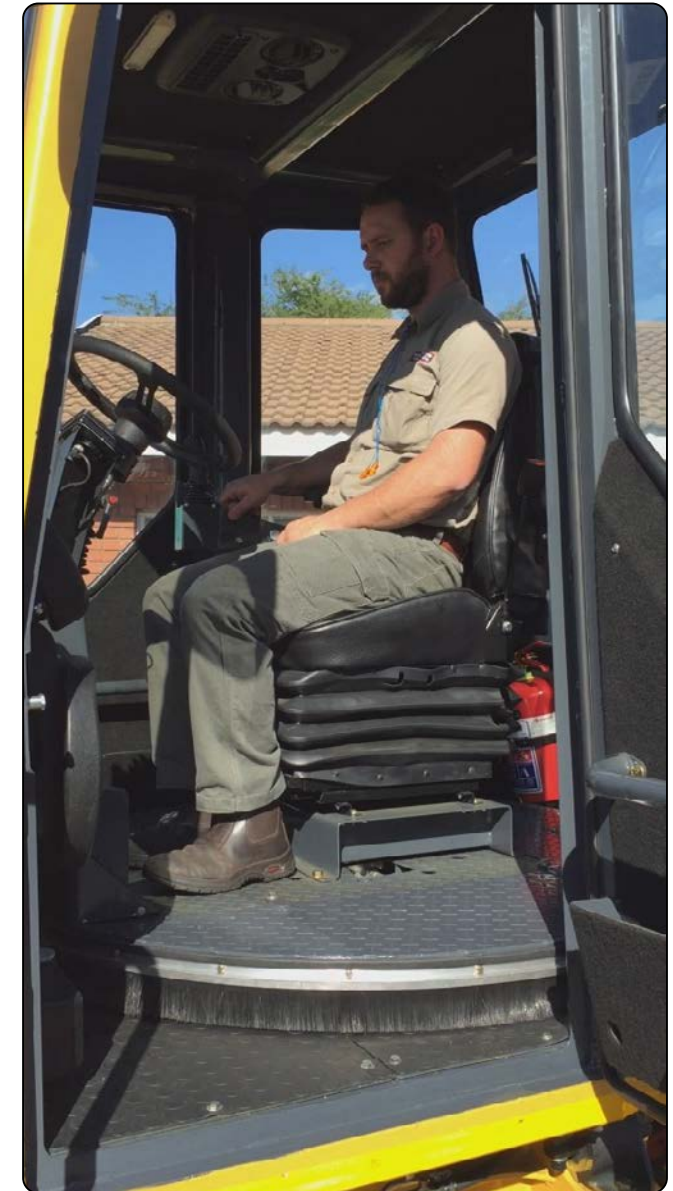


CAB ACCESS

Entrance to the cabin is from the front on both sides of the vehicle.
The doors open rearward to shield the operator from the hot payload, offering protection to the operator when entering the cabin.
The access stairs are protected from the pinch point.
The operator has access options from any side, improving efficiency and safety.

CAB DETAILS

The Seat is a Luxury Specification in order to minimize operator fatigue.
Safety Belts are of the 3 point harness type.
The command handles are arranged such that the movements may be carried out in a progressive and logical manner.
Position handles for trailer movements are by joystick on the right hand .
The steering, controls and seat are all mounted to a rotating operator station.
This ensures that the operator only has to set up his station once a shift, thereafter all seat movement when changing direction is carried out in one, simple motion.
This feature is a significant advantage in reducing operator fatigue and eliminating repetitive movement injuries .



SAFETY FEATURES

eif.com



LIGHTS AND SIGNALS

- Spotlights on cabin to light the work area (front and rear)
- Rear facing spotlights come on with reverse lights
- Main headlights and spots switch off automatically with engine
- Reverse Warning Alarm
- Direction Change Warning Alarm
- Amber Strobe Lights

STRUCTURAL SAFETY

The Operator's ROPS Cabin Tilts Hydraulically and has an automatic safety stay with fail-safe interlock.

All access panels are hinged and latched for security and ease of access.

Daily service points can be accessed from ground level.

Components are placed in accessible positions for ease of inspection and service. The components shall be grouped in sub-assemblies which are readily and easily serviceable.



SPECIFICATIONS



CATEGORY	DESCRIPTION	SPECIFICATION
Engine	4 Cylinder Perkins water cooled turbo charged	100 kW @ 2 000 rpm
Transmission	Hydrostatic	35 MPa peak pressure with load sensing
Park Brake	Wet multi disk - spring applied - hydraulic release	ISO 3450 Compliant
Service Brake	Hydrostatic - Parker	ISO 3450 Compliant
Auxiliary hydraulic pump	Variable displacement piston pump with load sensing and pressure compensation	20 Mpa Peak Pressure - Parker
Auxiliary hydraulic valve	Sectional valve with load sensing and section compensator for infinite speed control on all hydraulic functions.	30 MPa Peak Pressure - Parker
Auxiliary hydraulic valve	Load restraint valves to protect load from falling in event of a hose failure.	30 MPa Peak Pressure - Parker
Auxiliary hydraulic valve	Control via cab mounted joystick and two externally mounted joysticks on left and right of mast for ladle lift and lower function.	30 MPa Peak Pressure - Parker
Air Compressor	Hydraulically driven rotary screw compressor	8 Bar peak pressure with load sensing.
Cabin	Noise level: 75 dba	
Cabin	ROPS / FOPS	
Cabin	Shatterproof glass	
Cabin	Air suspension seat with 180 degree rotation	
Air Conditioning	Roof mounted with special 3 stage air filtration	24 V - 48 000 BTU

SERVICE AND AFTER-SALES

ett.com



ETT maintains a complete inventory of repair and maintenance parts for all our products. This includes accessory kits and service parts packages. We are committed to providing world class parts availability and technical support.

Our team of engineers and support staff are committed and focussed on ensuring your asset's performance and ultimately your satisfaction with ETT products.

Company

ETT is a leader in the field of innovation, design and manufacturing of specialised mobile equipment for Mining and Industry. Our solutions are aimed at improving productivity and safety and are currently deployed in over twenty countries around the world.

Customer Focus

It is our mission to always put the needs of our customers first. We achieve this by listening to, and clearly understanding our customer's needs, before initiating the process of developing or engineering a solution that exceeds our customers' expectations.



Technical manuals

- Operator's Manual.
 - Parts list and illustrations.
 - Maintenance and Servicing Manual.
- A printed copy is provided with each product, digital copies are available on request.

Spare parts

The ETT Spares Kit contains select components that are essential for machine operation. The ETT Spares Kit contains essential spare parts that can be kept on site to reduce waiting periods and minimise down time.

Parts Order

In the parts manual included with the service truck is a complete list of all parts and assemblies available for order at parts@ett.com



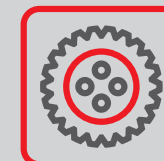
ISO
ACCREDITED



ON-SITE
ASSEMBLY



ACCESSORIES



SPARES



SERVICE



QUALITY

◀◀ BATH TAPPING VEHICLE - BTV

SPECIALISED SUPPORT EQUIPMENT

ett.com



◀◀ CONTACT US

info@ett.com

+27 35 751 1630

6 Brass Link Alton, Richards Bay, 3900, South Africa

www.ett.com

