



Specialized vehicle solutions for
Mining and Industry

GLAMA

Maschinenbau GmbH

ETT SMELTER PRODUCTS

ASBC



The ETT Aluminium Smelter Basement Cleaner is a durable and versatile remote skid steer loader. With a height of only 650mm, the loader can operate in the confines of smelter basements to remove alumina dust. The intuitive remote controller allows for easy and safe operation of the machine.

- HEIGHT: 650 mm
- WEIGHT: 1 121 kg
- Up to 600 gauss magnetic field resistance
- Remote controlled
- CAN bus control system
- 13 kW Yanmar diesel engine

LTTV



The ETT Ladle Transport and Tilting Vehicle is fitted with our second gen quick deploy launder, interlocking lift bed and our most durable power-head yet, ensuring exceptional efficiency and maximum uptime. The ladle lift bed utilises an over-centre locking mechanism to ensure safe transport and overall operation.

- Self aligning lid
- Load sensing hydraulics
- Over-centre bed lock
- Shielded operator cab
- Ladle spout lid

LTV



The ETT LTV combines proven principles and mechanisms with quality materials and components. The ladle lift bed utilises an over-centre locking mechanism to ensure safe transport and overall operation.

- Self aligning lid
- Over-centre bed lock
- Shielded operator cab

BTV



The ETT Bath Tapping Vehicle has a large capacity on-board compressor and a precise bath weighing system, allowing operators to accurately and efficiently perform their tasks. The BTV functions can be performed from inside the cab, as well as from the left and right hand sides externally.

- 360 degree FOV
- Programmable bath weighing
- Full control inside cab
- Full control left hand side outside cab
- Full control right hand side outside cab
- Rotating operator station in cab

FCV



The ETT Furnace Charging vehicle offers a platform for safe charging of furnaces. With a capacity of 10 tonnes, the ETT FCV can load large quantities of material, thereby reducing cycle times and allowing minimal energy loss. The FCV cab is shielded with high strength tempered glass to protect the operator in close vicinity of the furnace.

- CAPACITY: 10 tonnes
- Compatible with any forklift platform
- Shielded operator cab
- Highly maneuverable machine
- Versatile lifting fork

APT



The ETT Anode Pallet Transport Vehicle is a robust and reliable solution for transporting new or spent anodes and other pieces of equipment in the smelter environment. The APTV can transport anode pallets, bath tapping ladles, mobile hoppers, crust bins, tapped bath ingot moulds and any other equipment conforming to the weight specifications.

- LIFTING CAPACITY
- 16 tonnes
- POWER HEAD
- Compatible with any power head

GLAMA SMELTER PRODUCTS



Ladle Charging Trucks



Mobile Furnace Charging Machines



Mobile Furnace Tending Machines



Metal Tapping and Transfer Trucks



Anode Transport Vehicles

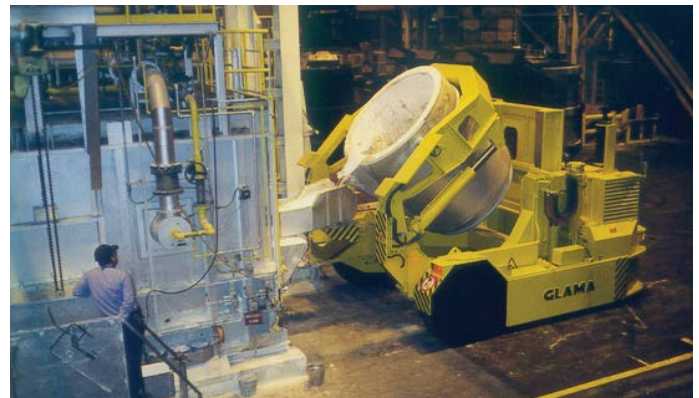


Anode Changing Machines

ETT - GLAMA Partnership

Engineering Top tech and GLAMA have partnered up to offer our clients a world class service point and full line technical machine offering to suite all smelter operations.

The ETT-GLAMA partnership also ensures that our customers have the ability to plan and execute process efficiency improvements to remain internationally competitive.



INNOVATIVE, EFFICIENT & DURABLE MACHINERY

ett.com



ETT maintains a complete inventory of repair and maintenance parts for all our products. This includes accessory kits and service parts packages.

We are committed to providing world class parts availability and technical support .

Our team of engineers and support staff are committed and focused on ensuring your asset's performance and ultimately your satisfaction with ETT products.

Company

ETT is a leader in the field of innovation, design and manufacturing of specialised mobile equipment for Mining and Industry. Our solutions are aimed at improving productivity and safety and are currently deployed in over twenty countries around the world.

Customer Focus

It is our mission to always put the needs of our customers first. We achieve this by listening to, and clearly understanding our customer's needs, before initiating the process of developing or engineering a solution that exceeds our customers' expectations.

phone
+27 35 751 1630

mail
info@ett.com

web
www.ett.com



 **ENGINEERING
TOP TECH Co**

Specialized vehicle solutions for Mining and Industry